

1.) ½” Inch dia (With Pro rata charges)

AEE (Receives the Application, Verifies, edit details if required & forwards for next process)



AE (Verifies, edit details if required & forwards for next process)



AEE (Verifies, edit details if required & Approves for next process)



DM (Raise's Demand note)



AEE (Verifies, edit details if required & Approves & send the demand note to the consumer)



Consumer receives the Demand note & pays the amount through Online payment (OWC application)



AEE (Verifies the payment received)



RM (Confirms the payment received)



AEE (Generates the RR-No.)



Consumer receives approval message from AEE & also simultaneously DM receives the connection sanctioned approval message from AEE



DM (He provides meter to the WI along with maker number)

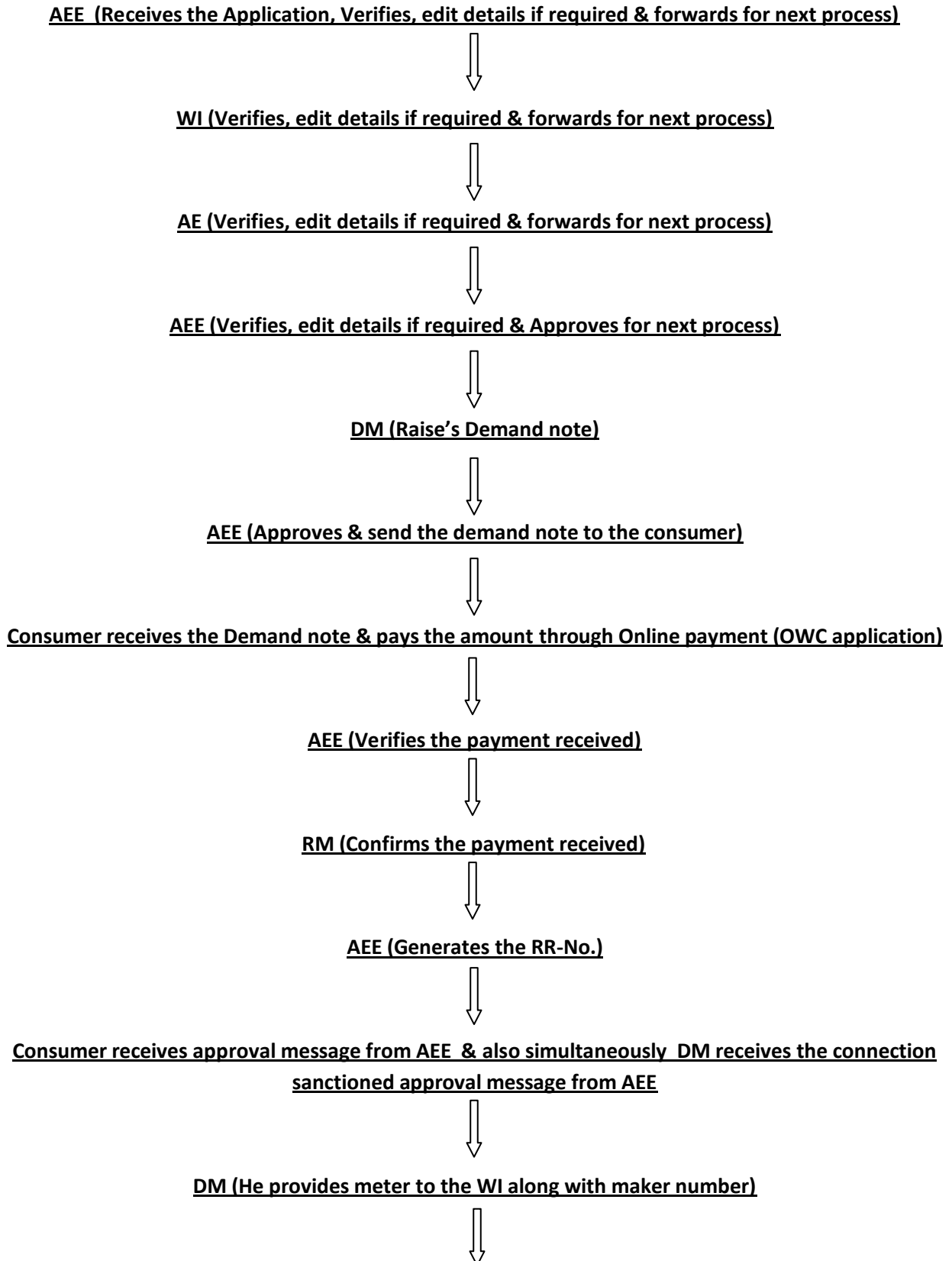


WI (He receives the meter & fixes the meter to the approved connection & update the status to AEE)



AEE (Verifies & closes the application process)

1.1) ½” Inch dia (Without Pro rata charges (Domestic))

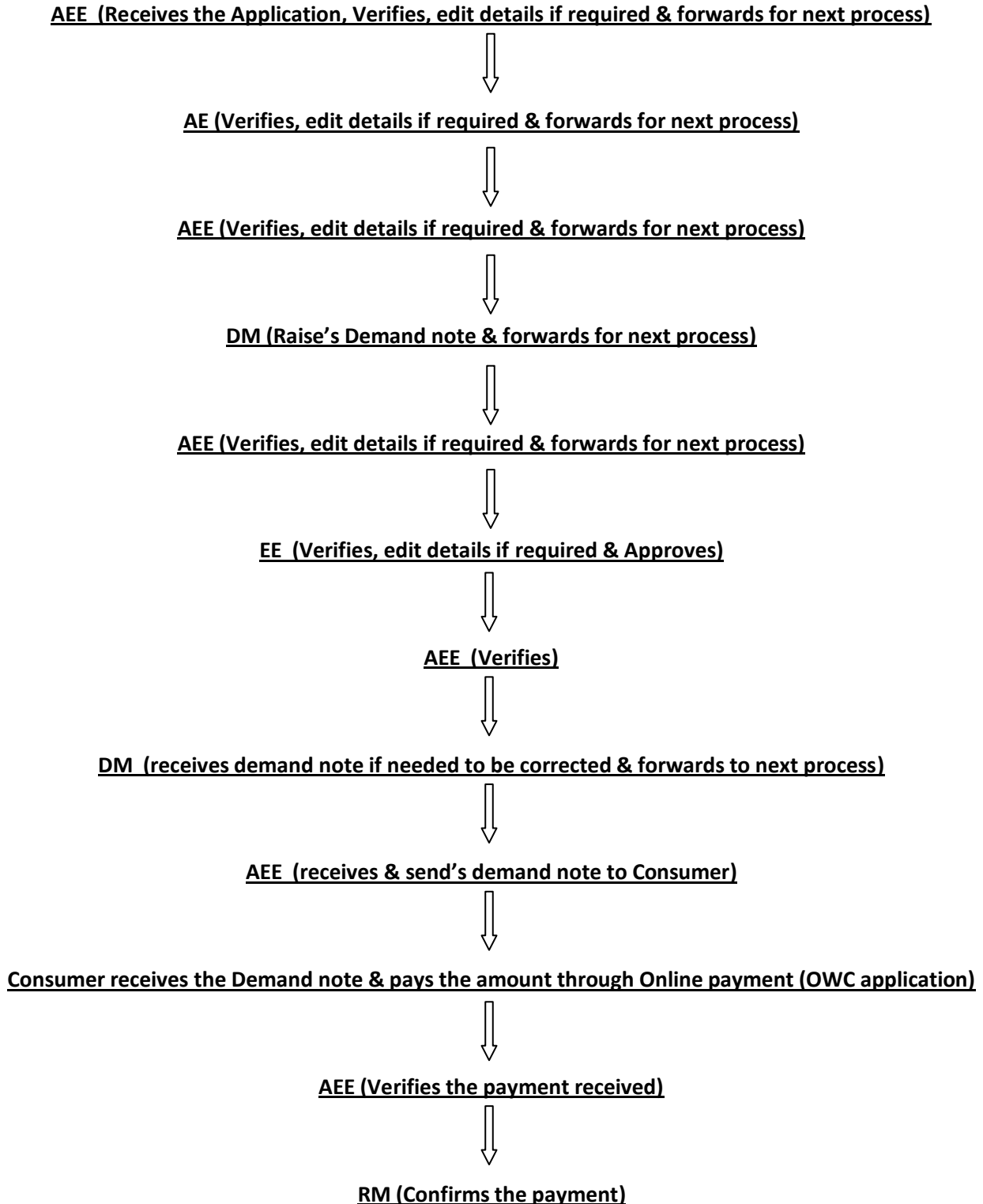


WI (He receives the meter & fixes the meter to the approved connection & update the status to AEE)



AEE (Verifies & closes the application process)

2.)3/4" Inch dia





AEE (Generates the RR-No.)



Consumer receives approval message from AEE & also simultaneously DM receives the connection sanctioned approval message from AEE



DM (He provides meter to the WI along with maker number)



WI (He receives the meter & fixes the meter to the approved connection & update the status to AEE)



AEE (Verifies & closes the application process)

3.) 1" Inch dia

AEE (Receives the Application, Verifies, edit details if required & forwards for next process)



AE (Verifies, edit details if required & forwards for next process)



AEE (Verifies, edit details if required & forwards for next process)



DM (Raise's Demand note & forwards for next process)



AEE (Verifies, edit details if required & forwards for next process)



EE (Verifies, edit details if required & forwards for next process)



ACE (Verifies, edit details if required & forwards for next process)



TA (Verifies, edit details if required & forwards for next process)



JE/AE (Verifies, edit details if required & forwards for next process)



TA (Verifies, edit details if required & forwards for next process)



DCE (Verifies, edit details if required & forwards for next process)



ACE (Verifies, edit details if required & forwards for next process)



CE(M) (Verifies, edit details if required & forwards for next process)



EIC (Verifies, edit details if required & Approves for next process)

Note: Consumer application & Demand draft not editable once approved by EIC



TA (Raise's Final demand note addressing to consumer)



DCE (Verifies & forwards to next process)



ACE (Verifies & forwards to next process)



CE (Verifies & forwards the demand note to the consumer)



Consumer receives the Demand note & pays the amount through Online payment (OWC application)



AC (Accounts department) (Confirms the received payment & forwards for next process)



CE (Verifies the received file, payment & forwards for next process)



AEE (Generates the RR-No.)



Consumer receives approval message from AEE & also simultaneously DM receives the connection sanctioned approval message from AEE



DM (He provides meter to the WI along with maker number)





WI (He receives the meter & fixes the meter to the approved connection & update the status to AEE)



AEE (Verifies & closes the application process)

4.) 1.1/2 " Inch dia

AEE (Receives the Application, Verifies, edit details if required & forwards for next process)



AE (Verifies, edit details if required & forwards for next process)



AEE (Verifies, edit details if required & forwards for next process)



DM (Raise's Demand note & forwards for next process)



AEE (Verifies, edit details if required & forwards for next process)



EE (Verifies, edit details if required & forwards for next process)



ACE (Verifies, edit details if required & forwards for next process)



TA (Verifies, edit details if required & forwards for next process)



JE/AE (Verifies, edit details if required & forwards for next process)



TA (Verifies, edit details if required & forwards for next process)



DCE (Verifies, edit details if required & forwards for next process)



ACE (Verifies, edit details if required & forwards for next process)



CE(M) (Verifies, edit details if required & forwards for next process)



EIC (Verifies, edit details if required & Approves for next process)

Note: Consumer application & Demand draft not editable once approved by EIC



TA (Raise's Final demand note addressing to consumer)



DCE (Verifies & forwards to next process)



ACE (Verifies & forwards to next process)



CE (Verifies & forwards the demand note to the consumer)



Consumer receives the Demand note & pays the amount through Online payment (OWC application)



AC (Accounts department) (Confirms the received payment & forwards for next process)



CE (Verifies the received file, payment & forwards for next process)



AEE (Generates the RR-No.)



Consumer receives approval message from AEE & also simultaneously DM receives the connection sanctioned approval message from AEE



DM (He provides meter to the WI along with maker number)





WI (He receives the meter & fixes the meter to the approved connection & update the status to AEE)



AEE (Verifies & closes the application process)

5.)2 “ Inch dia

AEE (Receives the Application, Verifies, edit details if required & forwards for next process)



AE (Verifies, edit details if required & forwards for next process)



AEE (Verifies, edit details if required & forwards for next process)



DM (Raise's Demand note & forwards for next process)



AEE (Verifies, edit details if required & forwards for next process)



EE (Verifies, edit details if required & forwards for next process)



ACE (Verifies, edit details if required & forwards for next process)



TA (Verifies, edit details if required & forwards for next process)



JE/AE (Verifies, edit details if required & forwards for next process)



TA (Verifies, edit details if required & forwards for next process)



DCE (Verifies, edit details if required & forwards for next process)



ACE (Verifies, edit details if required & forwards for next process)





CE(M) (Verifies, edit details if required & forwards for next process)



EIC (Verifies, edit details if required & Approves for next process)

Note: Consumer application & Demand draft not editable once approved by EIC



TA (Raise's Final demand note addressing to consumer)



DCE (Verifies & forwards to next process)



ACE (Verifies & forwards to next process)



CE (Verifies & forwards the demand note to the consumer)



Consumer receives the Demand note & pays the amount through Online payment (OWC application)



AC (Accounts department) (Confirms the received payment & forwards for next process)



CE (Verifies the received file, payment & forwards for next process)



AEE (Generates the RR-No.)



Consumer receives approval message from AEE & also simultaneously DM receives the connection sanctioned approval message from AEE



DM (He provides meter to the WI along with maker number)





WI (He receives the meter & fixes the meter to the approved connection & update the status to AEE)



AEE (Verifies & closes the application process)

6.)3 “ Inch dia ”

AEE (Receives the Application, Verifies, edit details if required & forwards for next process)



AE (Verifies, edit details if required & forwards for next process)



AEE (Verifies, edit details if required & forwards for next process)



DM (Raise’s Demand note & forwards for next process)



AEE (Verifies, edit details if required & forwards for next process)



EE (Verifies, edit details if required & forwards for next process)



ACE (Verifies, edit details if required & forwards for next process)



TA (Verifies, edit details if required & forwards for next process)



JE/AE (Verifies, edit details if required & forwards for next process)



TA (Verifies, edit details if required & forwards for next process)



DCE (Verifies, edit details if required & forwards for next process)



ACE (Verifies, edit details if required & forwards for next process)





CE(M) (Verifies, edit details if required & forwards for next process)



EIC (Verifies, edit details if required & Approves for next process)

Note: Consumer application & Demand draft not editable once approved by EIC



TA (Raise's Final demand note addressing to consumer)



DCE (Verifies & forwards to next process)



ACE (Verifies & forwards to next process)



CE (Verifies & forwards the demand note to the consumer)



Consumer receives the Demand note & pays the amount through Online payment (OWC application)



AC (Accounts department) (Confirms the received payment & forwards for next process)



CE (Verifies the received file, payment & forwards for next process)



AEE (Generates the RR-No.)



Consumer receives approval message from AEE & also simultaneously DM receives the connection sanctioned approval message from AEE



DM (He provides meter to the WI along with maker number)





WI (He receives the meter & fixes the meter to the approved connection & update the status to AEE)



AEE (Verifies & closes the application process)

7.)4 “ Inch dia ”

AEE (Receives the Application, Verifies, edit details if required & forwards for next process)



AE (Verifies, edit details if required & forwards for next process)



AEE (Verifies, edit details if required & forwards for next process)



DM (Raise’s Demand note & forwards for next process)



AEE (Verifies, edit details if required & forwards for next process)



EE (Verifies, edit details if required & forwards for next process)



ACE (Verifies, edit details if required & forwards for next process)



TA (Verifies, edit details if required & forwards for next process)



JE/AE (Verifies, edit details if required & forwards for next process)



TA (Verifies, edit details if required & forwards for next process)



DCE (Verifies, edit details if required & forwards for next process)



ACE (Verifies, edit details if required & forwards for next process)





CE(M) (Verifies, edit details if required & forwards for next process)



EIC (Verifies, edit details if required & & forwards for next process)



CHAIRMAN (Verifies, edit details if required & Approves for next process)

Note: Consumer application & Demand draft not editable once approved by CHAIRMAN



TA (Raise's Final demand note addressing to consumer)



DCE (Verifies & forwards to next process)



ACE (Verifies & forwards to next process)



CE (Verifies & forwards the demand note to the consumer)



Consumer receives the Demand note & pays the amount through Online payment (OWC application)



AC (Accounts department) (Confirms the received payment & forwards for next process)



CE (Verifies the received file, payment & forwards for next process)



AEE (Generates the RR-No.)



Consumer receives approval message from AEE & also simultaneously DM receives the connection sanctioned approval message from AEE



DM (He provides meter to the WI along with maker number)



WI (He receives the meter & fixes the meter to the approved connection & update the status to AEE)



AEE (Verifies & closes the application process)

